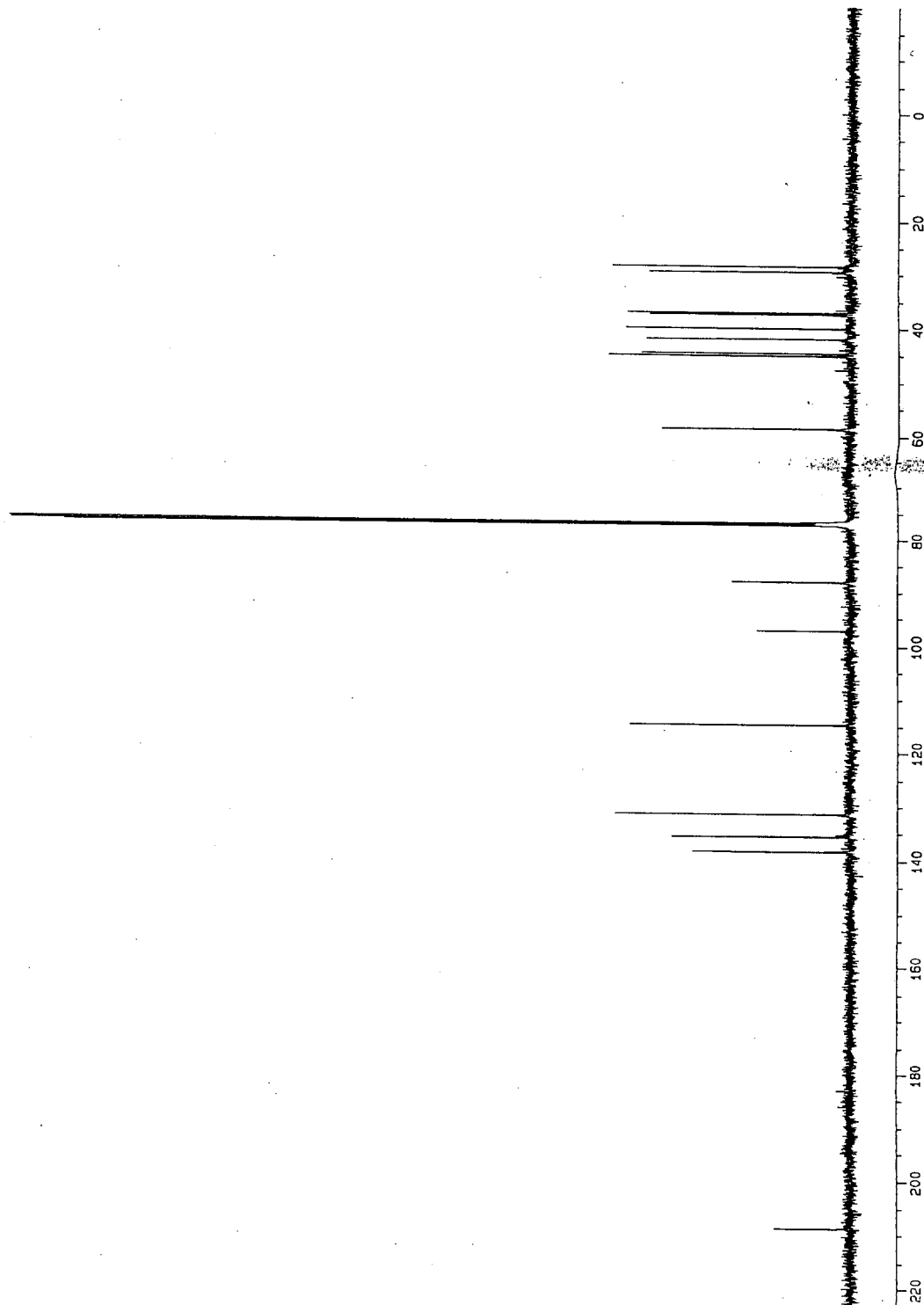


Current Data Parameters
 NAME mp29ajh386
 EXPNO 1
 PROCNO 1

F2 - Acquisition Parameters
 Date_ 990329
 Time 15.04
 INSTRUM DRX500
 PROBHD 5 mm Multinu
 PULPROG zgpg30
 TD 32768
 SOLVENT CDCl3
 NS 640
 DS 2
 SWH 35211.270 Hz
 FIDRES 1.074563 Hz
 AQ 0.4653556 sec
 RG 7298.2
 DM 14.200 usec
 DE 5.50 usec
 TE 300.0 K

F2 - Processing parameters
 SI 16384
 SF 125.7577971 MHz
 WDW EM
 SSB 0
 LB 3.00 Hz
 GB 0
 PC 1.00

1D NMR plot parameters
 CX 30.00 cm
 FIP 245.000 ppm
 F1 30810.66 Hz
 F2P -20.000 ppm
 F2 -2515.16 Hz
 PPMCM 8.83333 ppm/cm
 HZCM 1110.86060 Hz/cm



Cj 75%

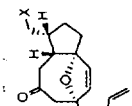
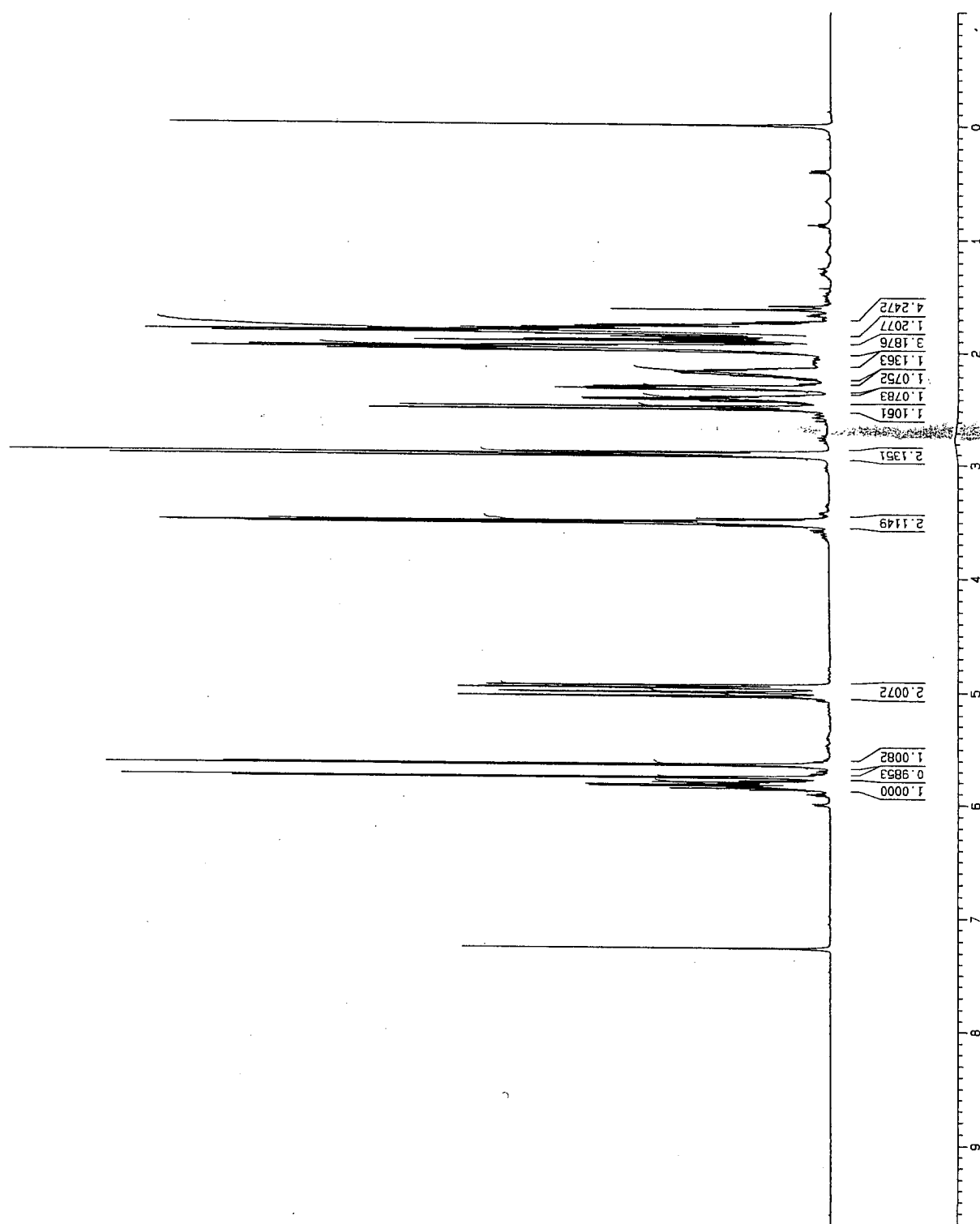
Current Data Parameters
 NAME ajh384-9June99
 EXPNO 1
 PROCNO 1

F2 - Acquisition Parameters
 Date_ 990603
 Time 16.48
 INSTRUM DRX500
 PROBHD 5 mm Multinou
 PULPROG zg30
 TD 32768
 SOLVENT CDCl3
 NS 16
 DS 2
 SWH 5995.204 Hz
 FIDRES 0.182959 Hz
 AQ 2.7329011 sec
 RG 64
 DM 83.400 usec
 DE 4.50 usec
 TE 300.0 K
 D1 1.00000000 sec
 P1 8.30 usec
 DE 4.50 usec
 SF01 500.1325006 MHz
 NUC1 1H
 PL1 -3.00 dB

F2 - Processing parameters
 SI 16384
 SF 500.1300245 MHz
 WDW no
 SSB 0
 LB 0.00 Hz
 GB 0
 PC 1.00

1D NMR plot parameters
 CX 30.00 cm
 F1P 10.500 ppm
 F1 5251.37 Hz
 F2P -1.000 ppm
 F2 -500.13 Hz
 PPMCM 0.38333 ppm/cm
 HZCM 191.71652 Hz/cm

ajh386-7june99



(X = Cl) 75%

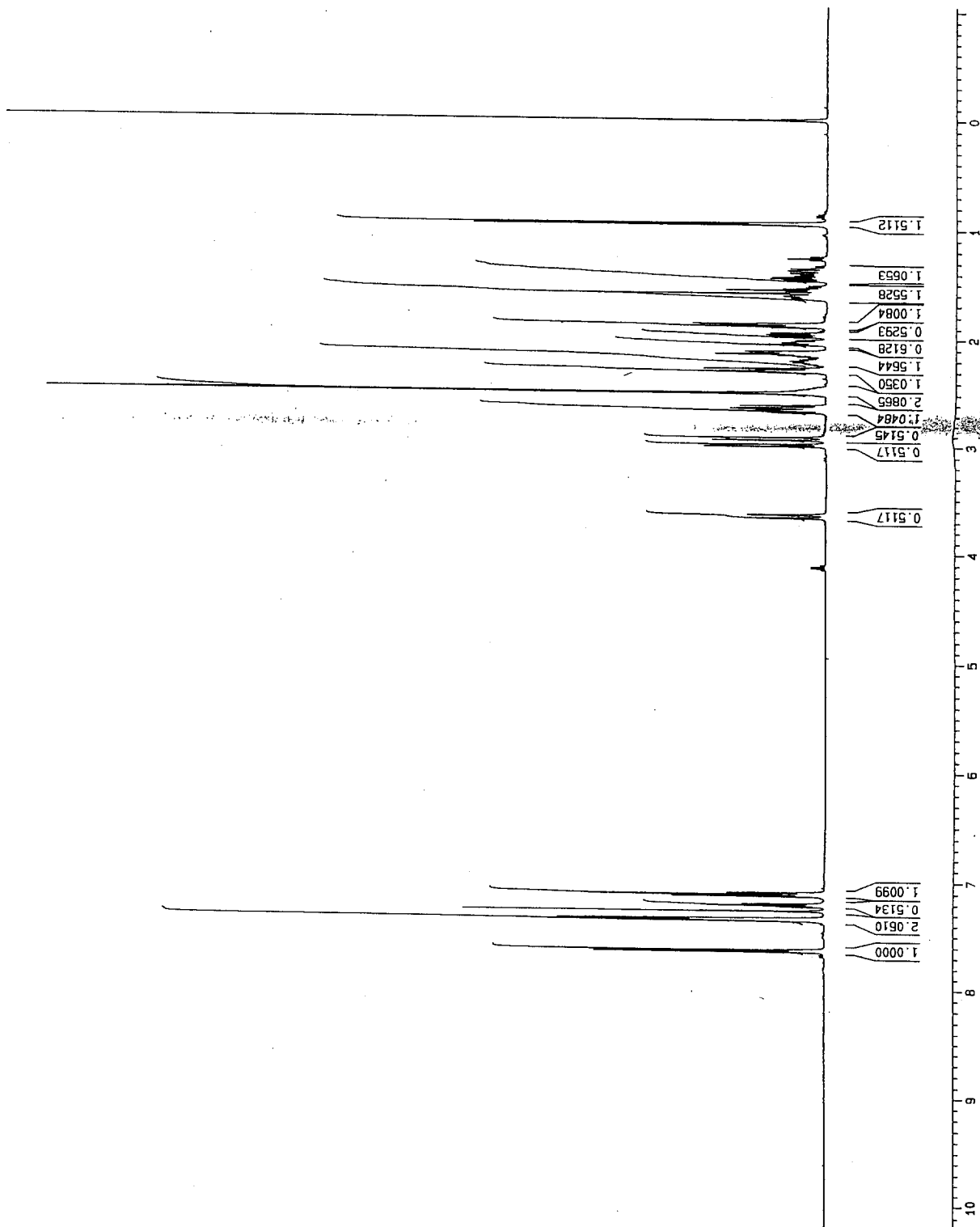
ajh429-3june99

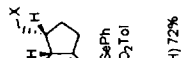
Current Data Parameters
 NAME ajh429-3june99
 EXPNO 1
 PROCNO 1

F2 - Acquisition Parameters
 Date_ 990503
 Time 17.02
 INSTRUM DRX500
 PROBHD 5 mm MUltinu
 PULPROG zg30
 TD 32768
 SOLVENT CDC13
 NS 16
 DS 2
 SMH 5995.204 Hz
 FIDRES 0.182959 Hz
 AQ 2.7329011 sec
 RG 128
 DW 83.400 usec
 DE 4.50 usec
 TE 300.0 K

F2 - Processing parameters
 SI 16384
 SF 500.1300270 MHz
 MDW no
 SSB 0
 LB 0.00 Hz
 GB 0
 PC 1.00

1D NMR plot parameters
 CX 30.00 cm
 F1P 10.940 ppm
 F1 5471.21 Hz
 F2P -1.048 ppm
 F2 -524.00 Hz
 PPMCM 0.39956 ppm/cm
 HZCM 199.84013 Hz/cm





SAMPLE BT5

RM 429

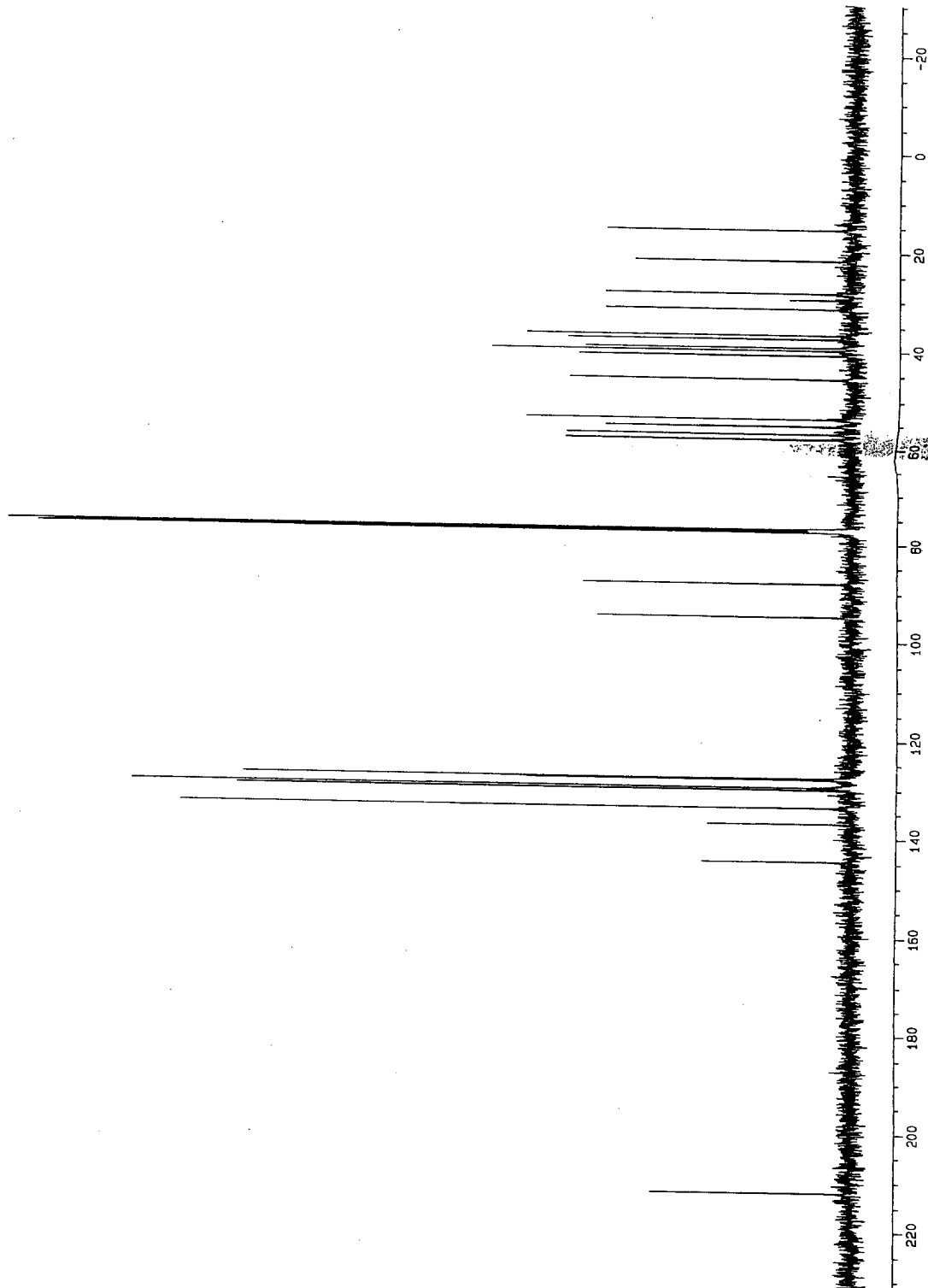
- 211.923
- 144.491
- 136.904
- 133.515
- 129.852
- 129.432
- 127.887
- 127.674
- 94.724
- 87.952
- 77.245
- 76.993
- 76.739
- 57.830
- 56.760
- 55.169
- 53.724
- 45.585
- 40.787
- 39.797
- 39.196
- 37.421
- 36.631
- 31.485
- 29.608
- 28.303
- 21.580
- 15.484

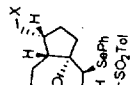
Current Data Parameters
 NAME may248jh.429
 EXPNO 1
 PROCNO 1

F2 - Acquisition Parameters
 Date_ 990524
 Time 10.21
 INSTRUM DRX500
 PROBHD 5 mm Multinu
 PULPROG zgpg30
 TD 32768
 SOLVENT CDC13
 NS 176
 DS 2
 SWH 35211.270 Hz
 FIDRES 1.074563 Hz
 AQ 0.4653656 sec
 RG 7298.2
 DM 14.200 usec
 DE 5.50 usec
 TE 300.0 K
 D12 0.0002000 sec
 PL13 16.00 dB
 D1 1.0000000 sec
 CPDPRG2 waltz16
 PCPD2 115.00 usec
 SF02 500.1327507 MHz
 NUC2 1H
 PL2 -3.00 dB
 PL12 16.00 dB
 P1 9.50 usec
 DE 5.50 usec
 SF01 125.7715724 MHz
 NUC1 13C
 PL1 5.00 dB
 D11 0.03000000 sec

F2 - Processing parameters
 SI 16384
 SF 125.7578035 MHz
 MDM EM
 SSB 0
 LB 3.00 Hz
 GB 0
 PC 1.00

1D NMR plot parameters
 CX 30.00 cm
 F1P 249.483 ppm
 F1 31374.48 Hz
 F2P -30.509 ppm
 F2 -3636.60 Hz
 PPMCM 9.33309 ppm/cm
 HZCM 1173.70911 Hz/cm





SPHS5%

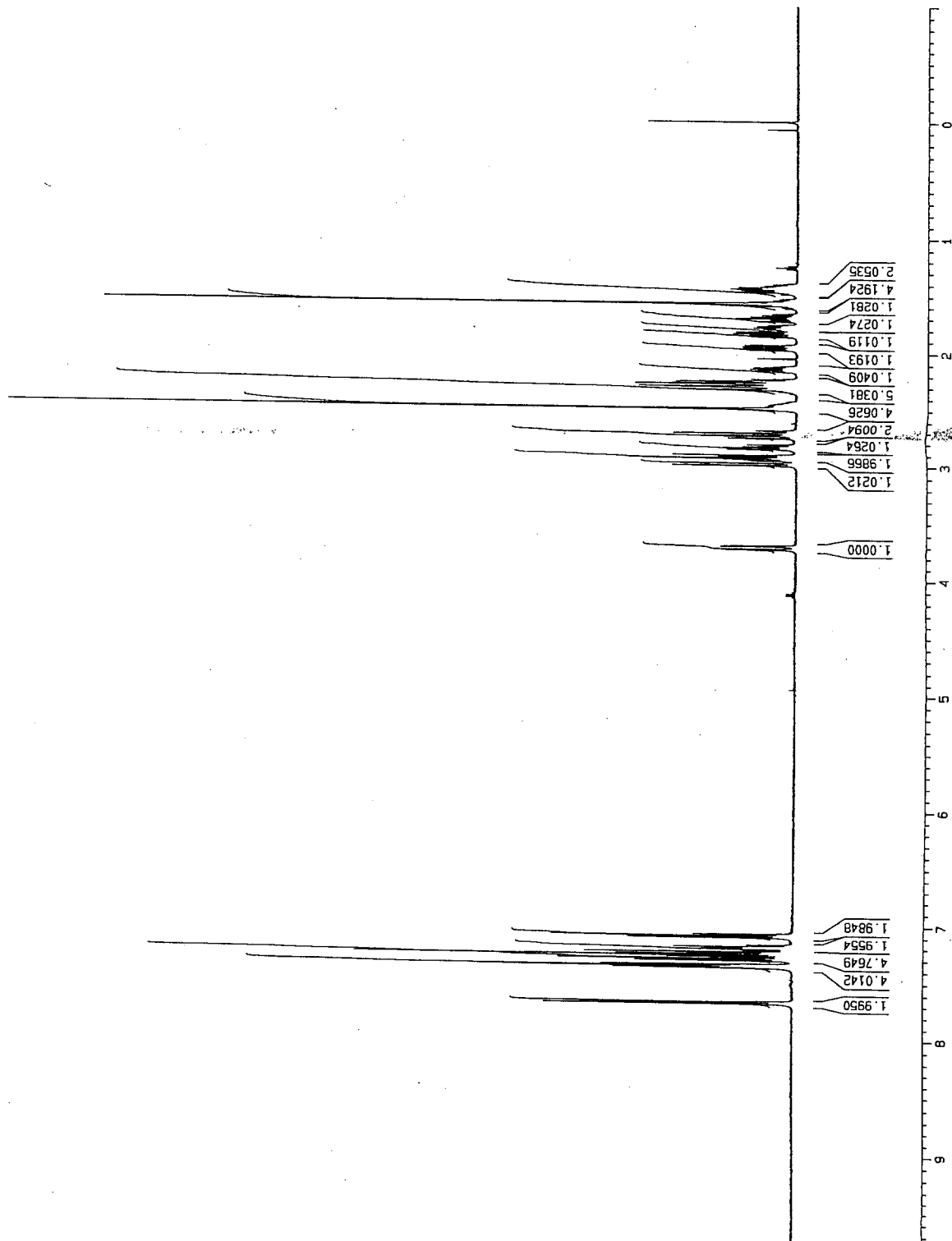
j129ajh.468

Current Data Parameters
 NAME j129ajh.468
 EXPNO 1
 PROCNO 2

F2 - Acquisition Parameters
 Date_ 990729
 Time 20.09
 INSTRUM DRX500
 PROBHD 5 mm Multinu
 PULPROG zg30
 TD 32768
 SOLVENT CDCl3
 NS 16
 DS 2
 SWH 5995.204 Hz
 FIDRES 0.182959 Hz
 AQ 2.7329011 sec
 RG 203.2
 DW 83.400 usec
 DE 4.50 usec
 TE 300.0 K
 D1 1.00000000 sec

***** CHANNEL f1 *****
 NUC1 1H
 P1 8.30 usec
 PL1 -3.00 dB
 SFO1 500.1325005 MHz

F2 - Processing parameters
 SI 16384
 SF 500.1300285 MHz
 WDW GM
 SSB 0
 LB -1.00 Hz
 GB 0.3
 PC 1.00
 1D NMR plot parameters
 CX 30.00 cm
 FIP 10.500 ppm
 F1 5251.37 Hz
 F2P -1.000 ppm
 F2 -500.13 Hz
 PPMCM 0.38333 ppm/cm
 HZCM 191.71652 Hz/cm



ajh468-20july99

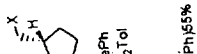
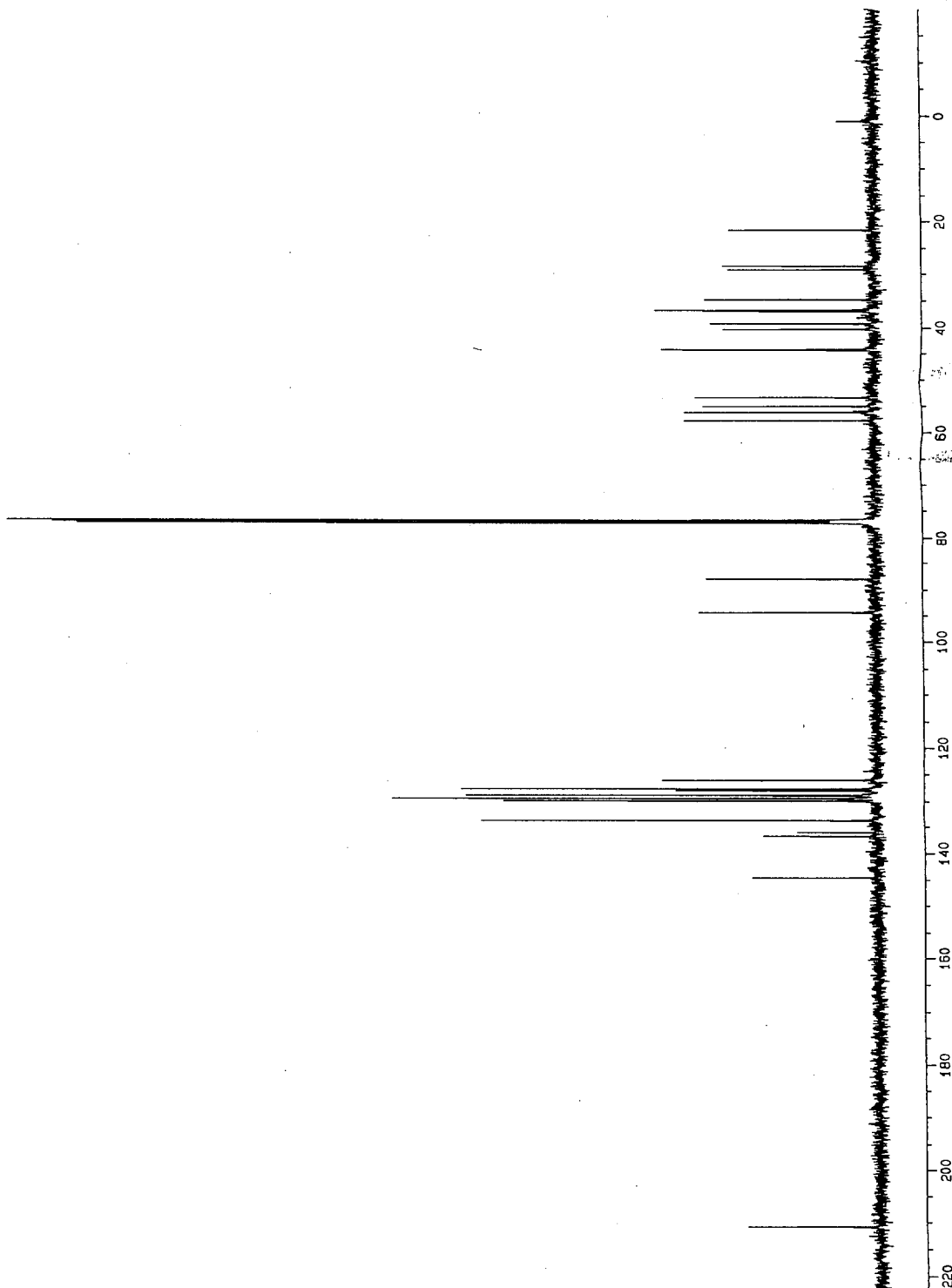
210.858
 144.606
 136.831
 136.134
 133.802
 129.915
 129.528
 129.448
 129.007
 128.887
 128.049
 127.722
 126.117
 94.415
 88.025
 77.246
 76.994
 76.740
 57.759
 56.233
 55.027
 53.224
 44.329
 44.191
 40.264
 39.181
 36.995
 36.756
 34.851
 29.124
 28.374
 21.611

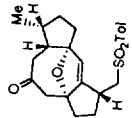
Current Data Parameters
 NAME j120ajh.468
 EXPNO 4
 PROCNO 1

F2 - Acquisition Parameters
 Date_ 990720
 Time 11.56
 INSTRUM DRX500
 PROBHD 5 mm Multinu
 PULPROG zgpg30
 TD 32768
 SOLVENT CDC13
 NS 512
 DS 2
 SWH 35211.270 Hz
 FIDRES 1.074563 Hz
 AQ 0.4653556 sec
 RG B192
 OW 14.200 usec
 DE 5.50 usec
 TE 300.0 K
 O12 0.00002000 sec
 PL13 16.00 dB
 D1 1.00000000 sec
 CPOPRG2 waltz15
 PCPD2 115.00 usec
 SF02 500.1327507 MHz
 NUC2 1H
 PL2 -3.00 dB
 PL12 16.00 dB
 P1 9.50 usec
 DE 5.50 usec
 SF01 125.7715724 MHz
 NUC1 13C
 PL1 5.00 dB
 D11 0.03000000 sec

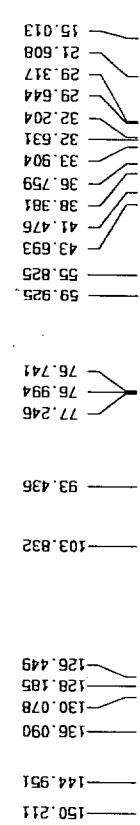
F2 - Processing Parameters
 SI 16384
 SF 125.7578014 MHz
 NDM EM
 SSB 0
 LB 3.00 Hz
 GB 0
 PC 1.00

10 NMR plot parameters
 CX 30.00 cm
 F1P 245.000 ppm
 F1 30810.66 Hz
 F2P -20.000 ppm
 F2 -2515.16 Hz
 PPMCM 8.83333 ppm/cm
 HZCM 1110.86060 Hz/cm





ajh477.3aug99



```

Current Data Parameters
NAME au03ajh.477
EXPNO 1
PROCNO 1

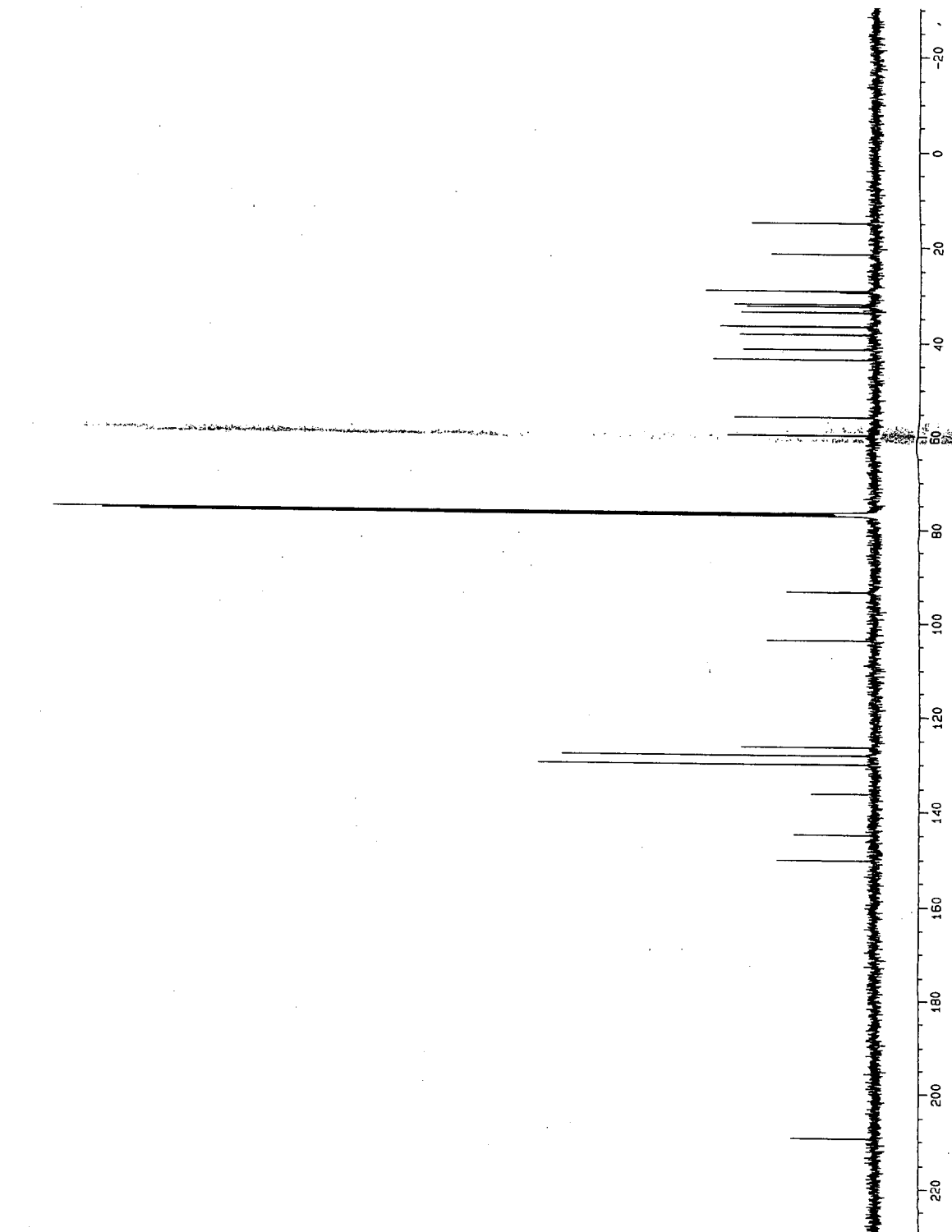
F2 - Acquisition Parameters
Date_ 990803
Time 14.52
INSTRUM DRX500
PROBHD 5 mm Multinu
PULPROG zgpg30
TD 32768
SOLVENT CDCl3
NS 512
DS 2
SMH 35211.270 Hz
FIDRES 1.074563 Hz
AQ 0.4653556 sec
RG 7298.2
DM 14.200 usec
DE 5.50 usec
TE 300.0 K
D1 1.00000000 sec
D11 0.03000000 sec
D12 0.00002000 sec

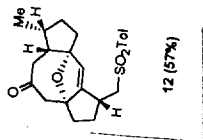
===== CHANNEL f1 =====
NUC1 13C
P1 9.50 usec
PL1 5.00 dB
SFO1 125.7715724 MHz

===== CHANNEL f2 =====
CPDPRG2 waltz16
NUC2 1H
PCPD2 115.00 usec
PL2 -3.00 dB
PL12 16.00 dB
PL13 16.00 dB
SF02 500.1327507 MHz

F2 - Processing parameters
SI 16384
SF 125.7577992 MHz
WDW EM
SSB 0
LB 3.00 Hz
GB 0
PC 1.00

1D NMR plot parameters
CX 30.00 cm
F1P 249.516 ppm
F1 31378.77 Hz
F2P -30.475 ppm
F2 -9632.50 Hz
PPMCM 9.33309 ppm/cm
HZCM 1173.70898 Hz/cm
    
```





j129ajh.477

Current Data Parameters
 NAME j129ajh.477
 EXPNO 1
 PROCNO 1

F2 - Acquisition Parameters
 Date_ 990729
 Time 18.57
 INSTRUM DRX500
 PROBH0 5 mm Multinu
 PULPROG zg30
 TD 32768
 SOLVENT CDCl3
 NS 16
 DS 2
 SWH 5995.204 Hz
 FIDRES 0.182959 Hz
 AQ 2.7329011 sec
 RG 90.5
 DM 83.400 usec
 DE 4.50 usec
 TE 300.0 K
 D1 1.0000000 sec

***** CHANNEL f1 *****
 NUC1 1H
 P1 8.30 usec
 PL1 -3.00 dB
 SF01 500.1325006 MHz

F2 - Processing parameters
 SI 16384
 SF 500.1300259 MHz
 KW no
 SSB 0
 LB 0.00 Hz
 GB 0
 PC 1.00

1D NMR plot parameters
 CX 30.00 cm
 F1P 10.500 ppm
 F1 5251.37 Hz
 F2P -1.000 ppm
 F2 -500.13 Hz
 PPMCM 0.36333 ppm/cm
 HZCM 191.71652 Hz/cm

